



NEWS | EVENTS

COLUMNS

DIVE SITES

REVIEWS

LIFE

DIVE & TRAVEL EXPO

ABOUT DNN

You are here: [Home](#) ▶ [Dive Sites](#) ▶ [Destinations](#) ▶ [Exotic Dive Sites](#) ▶ [Diving Russia's High Arctic: Beneath the White Sea](#)

Diving Russia's High Arctic: Beneath the White Sea

Details Published on Tuesday, 05 June 2012 22:24 Written by Eco-Photo Explorers



By Michael Salvatoreza
Christopher P. Weaver
Eco-Photo Explorers

We gathered in the frigid pre-dawn hours, our gear and luggage piled in front of the snowmobiles and our noses freezing in the -22°F (-30°C) temperatures. It was time to be saying good bye to our Russian hosts after a week of diving the frozen White Sea but we were tempted to linger just a little bit longer. It was during these last few moments, as we stood under a curtain of stars on a deep, dark winter's night in Russia that we reflected back on the events of the past week.



Eco-Photo

We had come to this remote spot a week earlier filled with both excitement and anxiety over the prospects of exploring the icy waters of the White Sea. Nestled alongside the Kola Peninsula, and straddling the Arctic Circle, the White Sea, technically part of the Barents Sea, is the only inland sea to completely freeze in the winter. Our base of operations for this ice-diving expedition was the Arctic Circle Dive Lodge, located near the seaside village of Nilma and just north of the Arctic Circle. To get here, we chose to fly to Finland, arriving in the alpine town of Kuusamo. After spending one day dog-sledding in a National Forest in Finland's fabled Lapland, it was time to complete our journey with an over land transit into Russia.

An 8-hour white knuckle ride across the border and through the Russian wilderness brought us to the lodge, ready to dive.

Diving the White Sea in winter requires preparation, equipment, fortitude and, most important, adequate training in ice diving techniques. With surface temperatures routinely dipping as low as -22°F (-30°C), and with snowfall an almost constant factor, divers must be prepared for extreme conditions. The entire White Sea is frozen with almost 3 feet of ice and the ice is covered with six inches or more of snow. Once below the ice, divers will find water temperatures hovering near 28°F (-2°C). Although visibility is generally good, the water can be extremely dark. Many of these dives can almost be considered night dives due to the lack of ambient light penetrating the ice ceiling. Fully functioning cold water gear and good training are essential.

The diving protocol employed here provides everything necessary to protect divers from the elements. Divers and gear are first transported from the lodge to the dive sites via snowmobile. The dive sites vary and can be as close as a 10-minute run or as far as a 45-minute trek across the ice covered sea. Once on site, specially constructed small wooden huts are used as shelters for donning or doffing equipment. Each hut is equipped with a wood burning heating system so divers can gain much needed warmth before, between and after dives. Indeed, the temperatures inside the huts are almost too hot and divers will often be seen propping the doors open to let in some cool air!

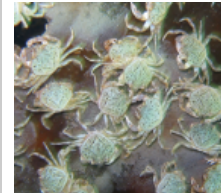
The huts are on skis and can be moved from location to location. They are generally placed within a few feet of the dive site, usually a triangular cut made into the ice and referred to locally as a "Maina". Once suited up, divers shuffle to the entrance and begin the icy plunge into the magical world beneath the frozen sea.

Our first dives in the White Sea took us to a site known as "Anemone Rock". Here, in 45 FSW (14m), a huge boulder lies on the bottom, perhaps 20ft (6m) in height. This rocky outcrop rises up from the slope of Bolshoy Krestovy (Big Cross) Island. Some say it is as big as a three-story building and shaped like a dragon's tooth. The seabed is very silty, so care must be taken so as not to stir up the bottom. Otherwise you will raise a tremendous cloud of sediment!

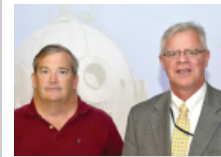
FEATURED NEWS



Happy Hour with Joe Romeiro



A Crowd of Crabs



Stennis Engineer Receives NASA Award for Artificial Reef Work



Beach County Rescue
Marine Debris Reporting and Removal Program Developing to Improve Ocean Environment

MOST POPULAR



Bahamas: Why we love diving here!



Whale Sharks in Southern Belize

Anemone Rock is so named because of the profusion of life that literally covers this massive structure. Frilled Anemones, colorful tunicates, beguiling nudibranchs and a wide variety of other small invertebrate life abound on this oasis of life in an otherwise nondescript sloping bottom. Wedged inside cracks in the rock are Wolf Fish, expertly positioned to avoid the range of our cameras! Looking more closely alongside the rock, we did find small bottom dwelling fish such as the Arctic Sculpin. Measuring close to 4 inches (10cm) in length, these wary denizens seemed unfazed by our attempts to photograph them...perhaps they were too cold to move!

Subsequent dives took us to dive sites alongside some of the islands in the White Sea. Small Cross Island is a small rocky outcropping with a tumbling, rocky slope, which we eagerly explored, photographing the kelp (laminaria) covered rocks and the dramatic ice ceiling above. Diving beneath the ice affords the diver an out-of-this-world experience as the surface ice takes on a greenish tint from the surrounding water.

Towards the end of our week's expedition, the temperatures plummeted from a rather comfortable 20°F (-7°C), to a bone-chilling -22°F (-30°C). Suddenly, our dives became more arduous as we struggled to stay warm and keep our equipment functioning. Residual water would freeze instantly in the air and our equipment became encased in ice in a matter of minutes. The entrance to the dive site would become a slushy mix of ice and snow, and any water exposed through the hole would also start to quickly freeze solid. As we descended through a 2-foot (.6m), tunnel of slush and ice, it took all of our self-control not to breathe off the regulators until fully submerged lest we risk causing a free flow. And once under the ice we preferred not to think too hard about whether the surface tenders were keeping the hole cleared of solid ice!

At Biofilter Bay, a location named for its abundance of shellfish and filter feeders covering its rocky bottom, we descended into a cathedral of ice. Biofilter Bay is nothing extraordinary in summer, but it completely changes in winter. The most interesting thing about ice diving here is the ice itself. Because of the strong tidal currents, the high and low water levels differ by up to 6ft (2 m), and the tidal cycle lasts about 12 hours. As the ice rises and falls within the water column, it freezes to the rock faces and other ice formations. It then breaks off and tumbles around bumping into each other, then freezes again to these surfaces. This constant tumbling and moving about allows the ice to carve amazing underwater ice sculptures. As we drifted along the sloping shoreline just under the ice ceiling, we were able to witness and explore these chaotic jumbles of fragmented ice crushed together in magnificently sublime formations. Huge slabs of ice along with bulbous ice boulders floated in the frozen sea, and as we swam in and around these icy monuments to nature's true beauty and power, we became reflective of how special this place really is. With only our line to lead us back to the opening and to the spine tingling cold of the world above, we were truly encapsulated in the silence of the frozen ice spectacle below. We floated among these grand ice displays, becoming one with its frozen beauty before reluctantly returning to the entry hole and the surface.

Beneath the White Sea, in the mysterious and seldom visited Russian Arctic, we had experienced moments of true physical hardship along with experiences of fabulous and magnificent beauty. And now, as we stood in the bitter cold waiting for our transport back to Finland, we swapped stories and reflected on our experiences. Suddenly, as if on cue, a shout rang out in the night: "Aurora!"

We all excitedly scrambled back to the edge of the frozen sea, our feet standing in newly frozen snow, and we looked up to the sky. There, a shimmering, undulating miracle of nature was being displayed across the night sky...the Aurora Borealis (Northern Lights)! The script could not have been written more perfectly...it was as if we were being bid farewell by the Arctic itself. With brilliant greens and yellows, the Aurora danced for us as we departed...a dance of indescribable beauty that has beguiled people for millennia in the northern latitudes. And one that will continue for millennia to come.

White Sea Information

Dive Time: Usually 20-45 minutes, diver dependent.

Breathing Gas: Air, Nitrox is not available.

Depth: Rope dependent; usually not more than about 65ft (20m).

Water Visibility: 50-150ft (15-50m).

Ice Thickness: up to 5ft (1.5m).

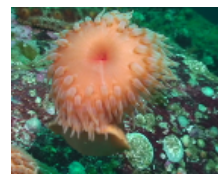
Water temperature: 30-28F (-1C to -2C)

Air temperature: 43F to -22F (+6C to -30C)

Salinity: 27.5 parts per thousand, lower than the mean salinity of the Arctic Ocean

Heated huts are available for divers to don/duff gear, and to relax between dives. Snowmobiles are used to transport divers and equipment to and from the dive sites. Diver tenders help divers exit the dive hole; ladders are not used.

White Sea Expeditions
www.ecophotoexplorers.com/whitesea.asp



Observations of Aquatic Behavior

ACTIVITIES PREVIEW

01

AUG - 2012

Suncoast Reef Rovers

6 p.m., Nokomis community Center, Venice, FL [READ MORE »](#)

2

AUG - 2012

Caloosa Dive Club Meeting

8 p.m., Cape Coral Yacht Club, Cape Coral, FL [READ MORE »](#)

SHARE YOUR THOUGHTS...



Add a comment...

Comment

Posting as Christopher Weaver
(Change)

Post to Facebook

Facebook social plugin

SOUTHEAST



SOUTHEAST DIVE NEWS

NORTHEAST



NORTHEAST DIVE NEWS

MIDWEST



MIDWEST DIVE NEWS

NORTHWEST



NORTHWEST DIVE NEWS

SOUTHWEST



SOUTHWEST DIVE NEWS

FOOTER SITE MAP

NEWS | EVENTS

- Hot News
- Regional News
- Online Exclusive
- Activities

COLUMNS

- Rick's Blog
- Incoming Mail
- Mystery Critter
- Amittyville
- Oh Behave!
- Boating Regulations

DIVE SITES & DESTINATIONS

- US
- Canada
- Exotic

REVIEWS

- Equipment
- Shop | Resort | Charter
- Books | Videos

LIFESTYLES

- DAN - Medical & Safety Advice
- Healthy Diving Lifestyle
- Family

DIVE & TRAVEL EXPO

- Tacoma, WA Expo
- Santa Clara, CA Expo

ABOUT DNN

- Subscribe
- Work for DNN
- History
- Contact Us
- Advertise

ADVERTISE WITH US

We are a network of regional magazines both in print and online that link consumers and businesses together.

Covering North America's dive news from coast to coast with Southeast, Southwest, Northwest, Midwest and Northeast editions.

Home | Contact Us

Top

DIVE NEWS NETWORK MEDIA GROUP